



# SOUTH VETERANS PARKWAY PROJECT OVERVIEW

## CONSTRUCTION UPDATE

The section of new road from Western Avenue to Cliff Avenue has been under construction since June 2023, and work is scheduled to continue through 2024. The other three segments of the project are still being designed. Construction work with traffic impacts continue to occur on Western Avenue and Minnesota Avenue near the new South Veterans Parkway in 2024.

## Project Overview

Design and construction for South Veterans Parkway is underway. In 2020, the South Dakota Transportation Commission approved the plans to complete construction of the remaining 8.7 miles that make up the southern section of Veterans Parkway from Interstate 29 to 57th Street.

When connected to the northern segment of Veterans Parkway, the additional roadway will support a regional arterial road network around southeast Sioux Falls. This project — the final stage in connecting I-29 with I-90 — will accommodate growing transportation needs across the corridor and prepare the greater Sioux Falls area for continued vibrant growth and development.

## CONSTRUCTION SCHEDULE AND COST

Costs include Permanent Easement, Temporary Easement, Real Estate Services, Utilities, and Construction



## Project Benefits



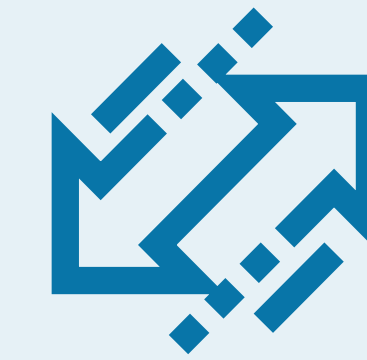
Reduces overall traffic congestion throughout the City of Sioux Falls



Helps meet future transportation needs resulting from regional growth



Accommodates public and private investments



Improves accessibility throughout the Sioux Falls regional transportation network, especially in southern and eastern Sioux Falls



Provides safer routes and crossings for pedestrians and bicyclists

SCAN ME!



CONNECT WITH US!

Get project information, sign up to receive email updates, and contact the project team.

✉ [Connect@southveteransparkway.com](mailto:Connect@southveteransparkway.com)

🌐 [www.southveteransparkway.com](http://www.southveteransparkway.com)

# SOUTH VETERANS PARKWAY

## COSTS AND CONSTRUCTION SCHEDULE

**Total Cost \$208.9 Million**

(\$176M State; \$32.9M City;  
includes PE, ROW, UT, CE, & Construction)



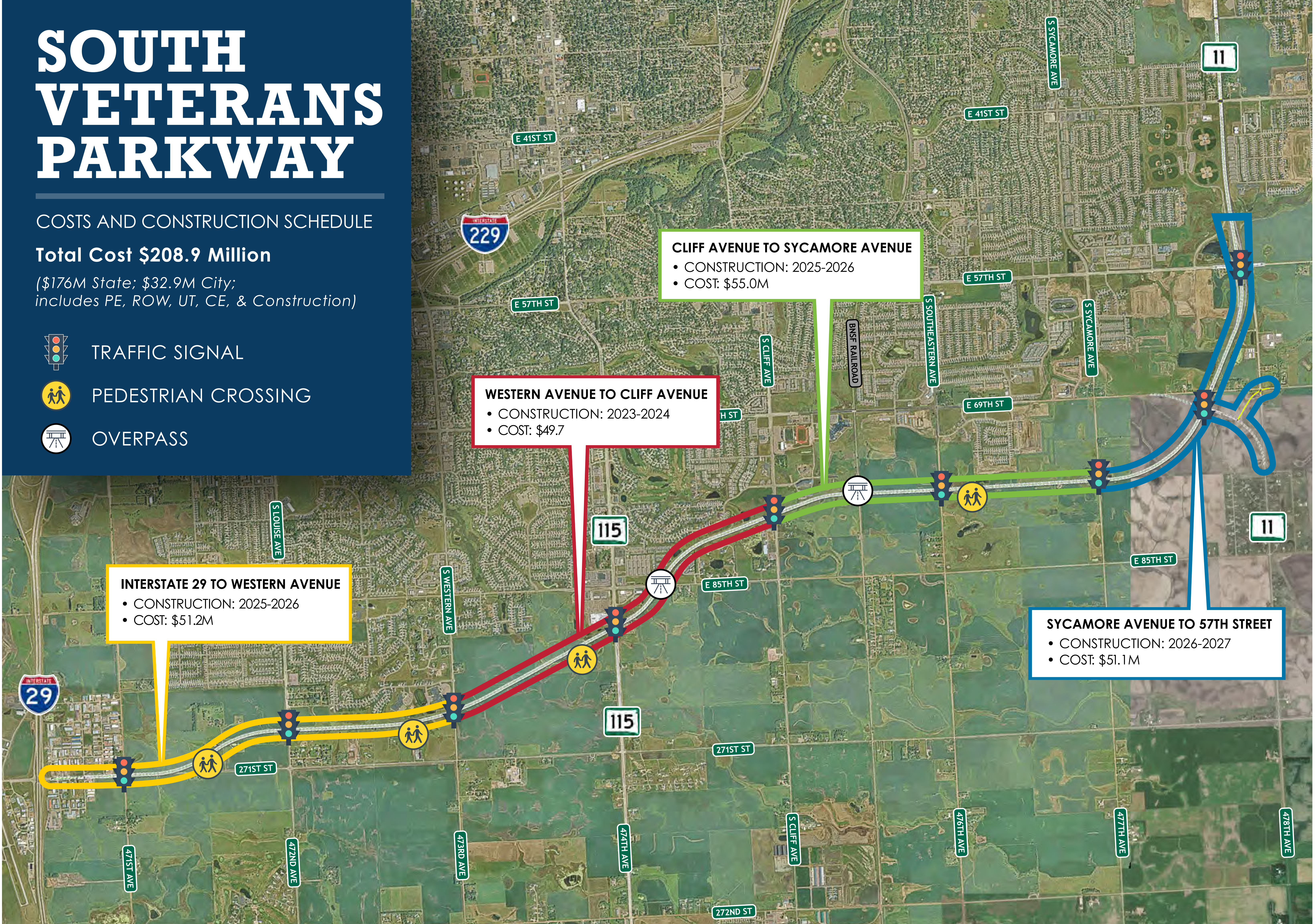
TRAFFIC SIGNAL



PEDESTRIAN CROSSING



OVERPASS



**INTERSTATE 29 TO WESTERN AVENUE**

- CONSTRUCTION: 2025-2026
- COST: \$51.2M

**WESTERN AVENUE TO CLIFF AVENUE**

- CONSTRUCTION: 2023-2024
- COST: \$49.7

**CLIFF AVENUE TO SYCAMORE AVENUE**

- CONSTRUCTION: 2025-2026
- COST: \$55.0M

**SYCAMORE AVENUE TO 57TH STREET**

- CONSTRUCTION: 2026-2027
- COST: \$51.1M




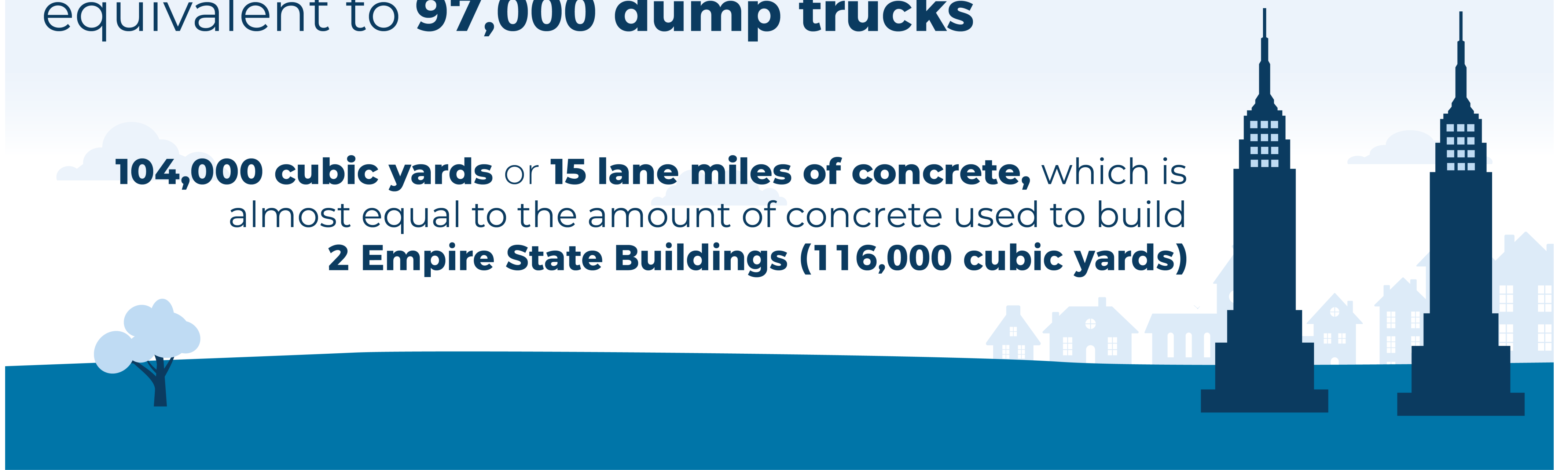
# SOUTH VETERANS PARKWAY CONSTRUCTION QUICK FACTS

Building a new road requires a lot of materials. Construction of South Veterans Parkway from **Western Avenue to Cliff Avenue** will use:


## 1.2 MILLION CUBIC YARDS

of earthwork (moving/placing dirt), which is equivalent to **97,000 dump trucks**


**104,000 cubic yards** or **15 lane miles of concrete**, which is almost equal to the amount of concrete used to build **2 Empire State Buildings (116,000 cubic yards)**




**98 LIGHT POLES**




**4.2 miles** of storm water pipe



**6 miles** of fiber-optic cable



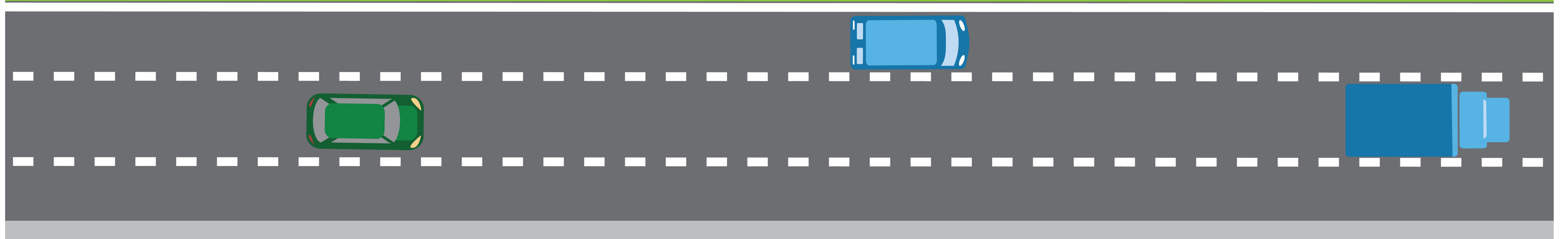
**17.4 miles** of wire



**11 miles** of silt fence for erosion control



**9 miles** of pavement markings



**5.8 miles** of curb and gutter



**2,200 pounds** of grass seed

**98,000**

**tons** of gravel



# SOUTH VETERANS PARKWAY WHAT TO EXPECT DURING CONSTRUCTION

## Dirt Work

Construction projects like South Veterans Parkway are designed to be as efficient and cost-effective as possible, by including excavating dirt and other materials for the road bed in areas close to the project site. Benefits include:



Hauling trucks travel shorter distances, saving time and money while minimizing impacts to the traveling public and environment.



The excavated areas also serve as future detention ponds, which mitigate potential impacts to downstream properties by detaining storm water runoff and releasing it at a slower rate.

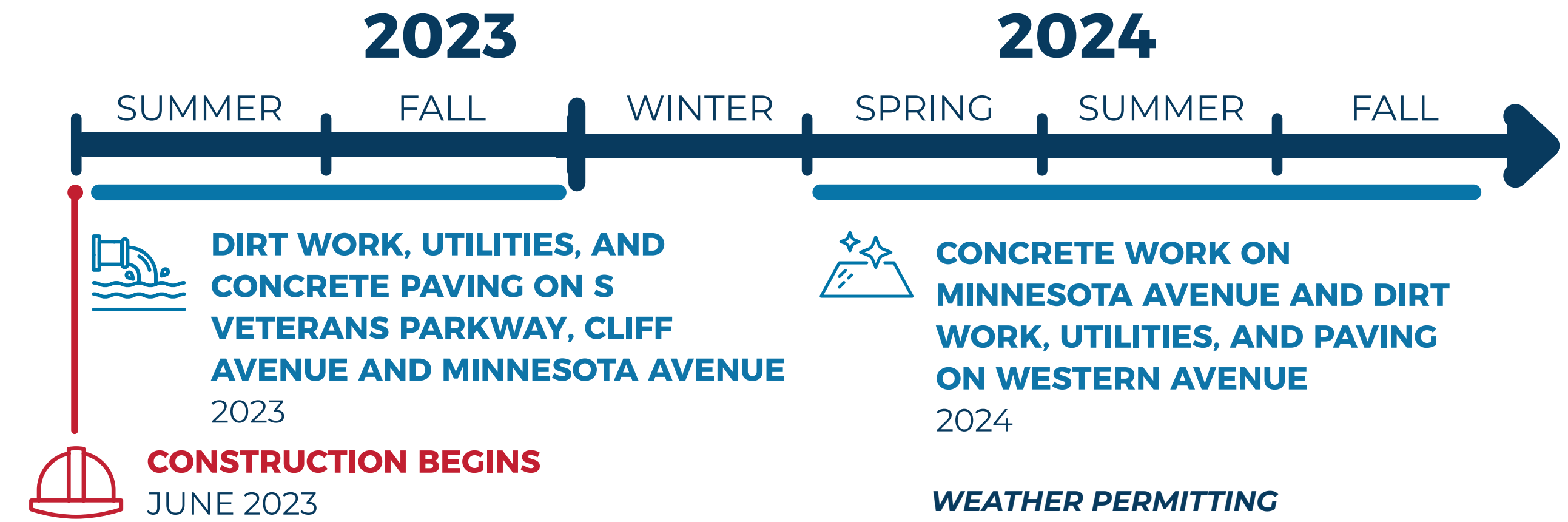


There are cost savings from purchasing land for excavation near the project area rather than relying on more expensive excavation areas that are further away.

## Traffic Impacts

Construction work with traffic impacts will continue to occur on Western Avenue and Minnesota Avenue near the new South Veterans Parkway in 2024. Construction began in June 2023, and work will continue on Western Avenue and Minnesota Avenue through 2024.

- In 2023 construction work included moving dirt to build the roadway. Although this work is complete, there will still be construction traffic on the adjacent arterials.
- Construction traffic consisting of trucks carrying gravel, concrete, and asphalt will occur throughout 2024.
- Please be careful and remain vigilant to ensure safe driving. The construction traffic may be entering or exiting the roadway at odd times and from locations not expected. Please drive carefully.





# SOUTH VETERANS PARKWAY MAJOR TRAFFIC IMPACTS - ADJACENT INTERSECTIONS



### Cliff Avenue

Construction on Cliff Avenue near the new South Veterans Parkway was completed in 2023!

### Minnesota Avenue

- Contract No. 08DE.
- Construction will begin in March 2024 (weather permitting) and will include a 20 day full closure.
- Construction complete by 2025.

**Summary of work:** Utility improvements and road work, including turn lane additions

### Western Avenue

- Construction in 2024 (271st Street to just south of 95th Street)
- Contract No. 08DD
- In coordination with the 2024 summer break from school, the intersection at 95th Street will be closed.

**Summary of work:** Utility improvements and road work, including constructing a roundabout

## 2024 Intersection Closures

- Traffic on Western Avenue will be detoured onto LC Highway 106/271st Street, Cliff Avenue, Louise Avenue, and 69th Street.
- Western Avenue closure south of 95th Street expected March 18th. The 95th Street intersection at Western Avenue will remain open until school is out for summer break.
- Every effort will be made to minimize travel impacts to motorists.
- Access to adjacent businesses and residences will be maintained during construction.

## Traffic Signals

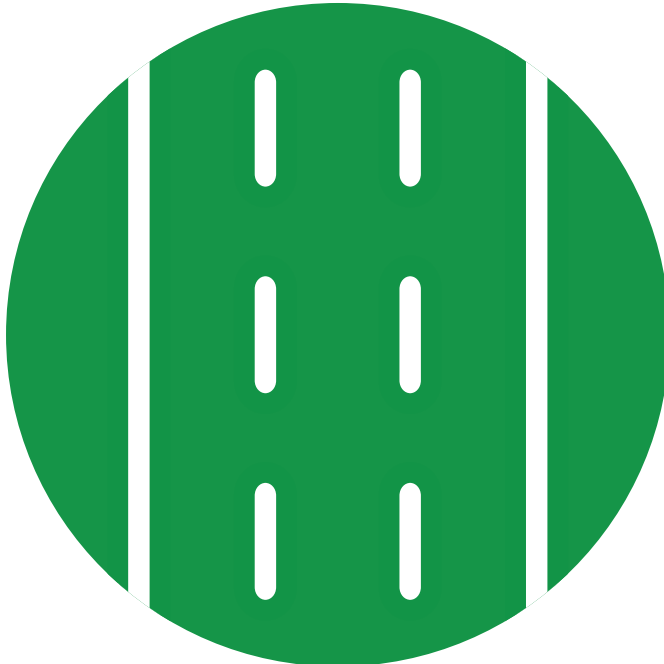
Traffic signals will be installed at 85th Street and Western Avenue to accommodate the additional detoured traffic from the closure of Western Avenue between 95th Street and LC Highway 106/271st Street.



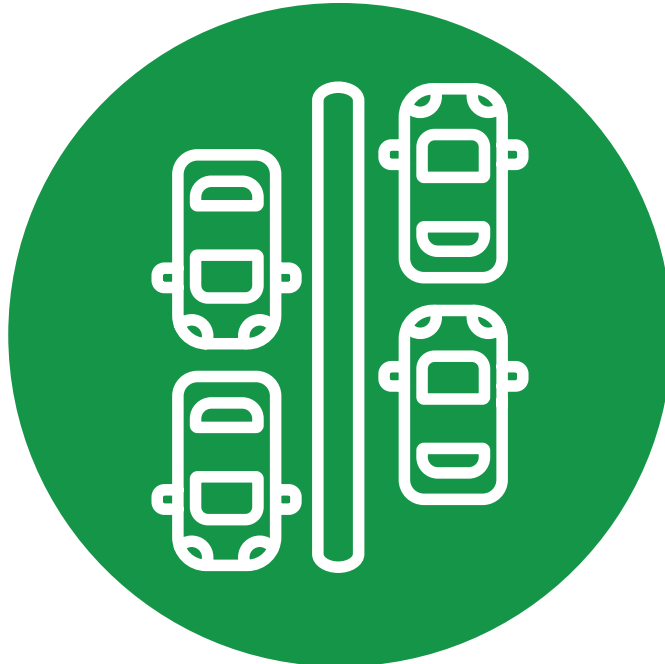
# **SOUTH VETERANS PARKWAY**

## **WHAT YOU CAN EXPECT AFTER CONSTRUCTION**

South Veterans Parkway will look similar to the roadway north of Arrowhead Parkway. In general, the new parkway will consist of:



**Three lanes per direction**



**A 32-foot raised median separating the travel lanes**



**Shared use path along the south side of the parkway**



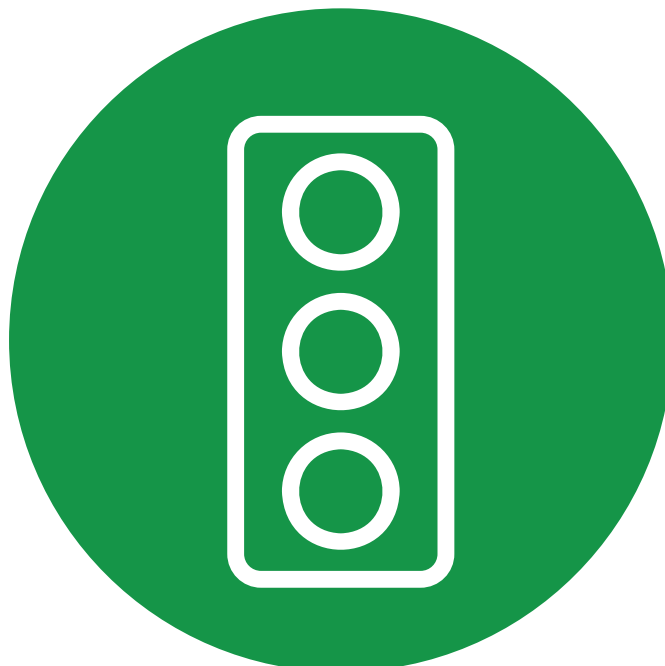
**Grass boulevard separating the path from the roadway**



**Posted speed limit of 55 mph**



**Pedestrian underpass**



**ADA-accessible intersections**



# SOUTH VETERANS PARKWAY ROUNABOUT

ROUNABOUT:

## Coming Soon to 95th Street and Western Avenue

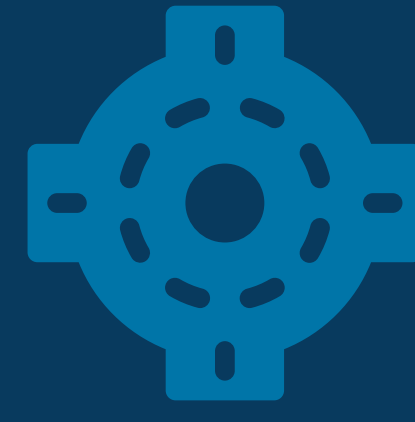
Long-term planning for this area indicated the need for a traffic signal or a roundabout at this intersection.

### The addition of a roundabout will help to:

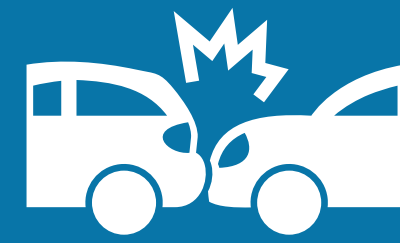
**Ease traffic congestion**, especially during school pick-up and drop-off hours, and help reduce traffic from backing up into conflicting turn lanes

**Reduce confusion about traffic movements** and make entering and exiting the school parking lot easier for users

**Enhance safety.** Roundabouts have been identified as a proven safety countermeasure by the Federal Highway Administration (FHWA) because of their ability to substantially reduce the types of crashes that result in injury or loss of life.



## BENEFITS OF A ROUNABOUT



Significantly reduces the risk of serious and fatal crashes

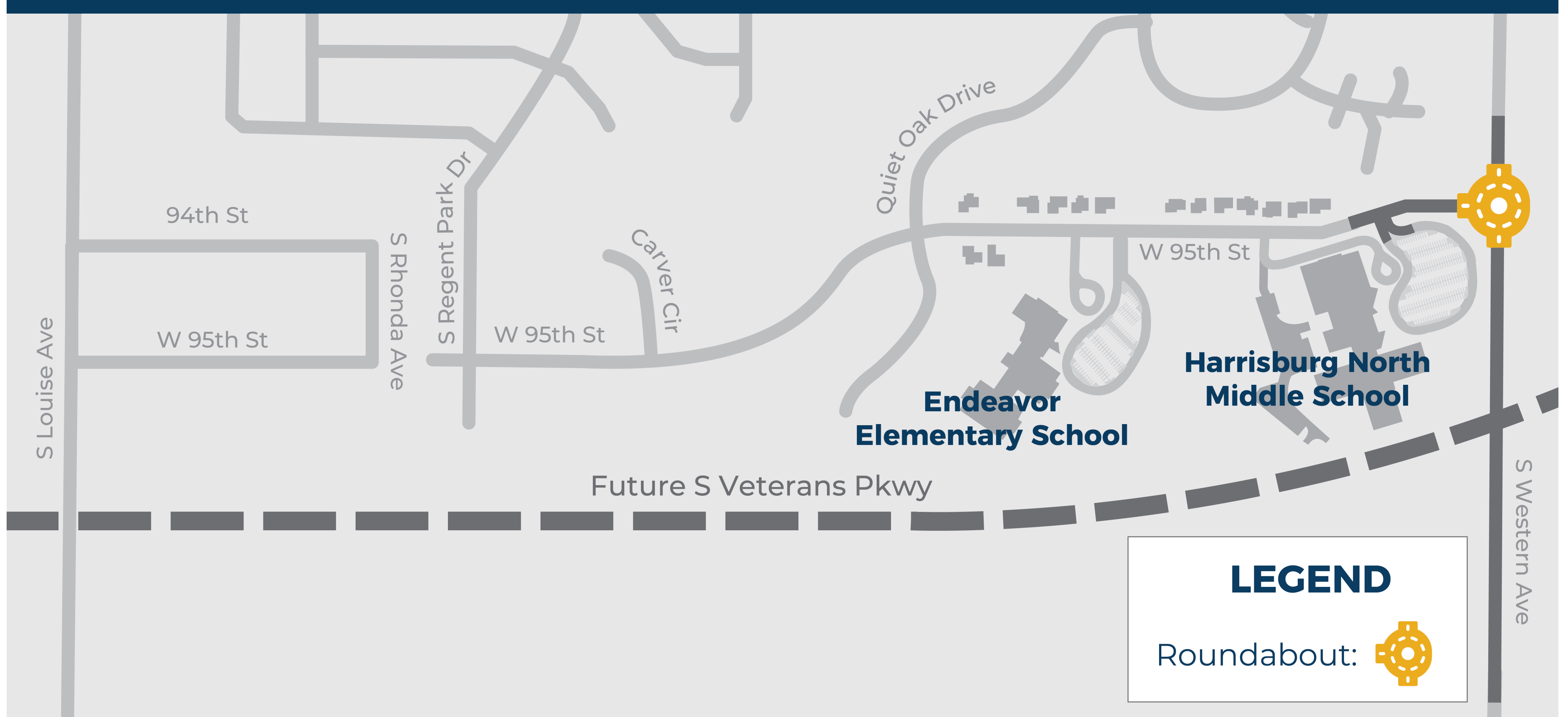


Allows drivers to travel more safely through the intersection and in less time



Allows traffic to make entering and exiting the area easier for all users

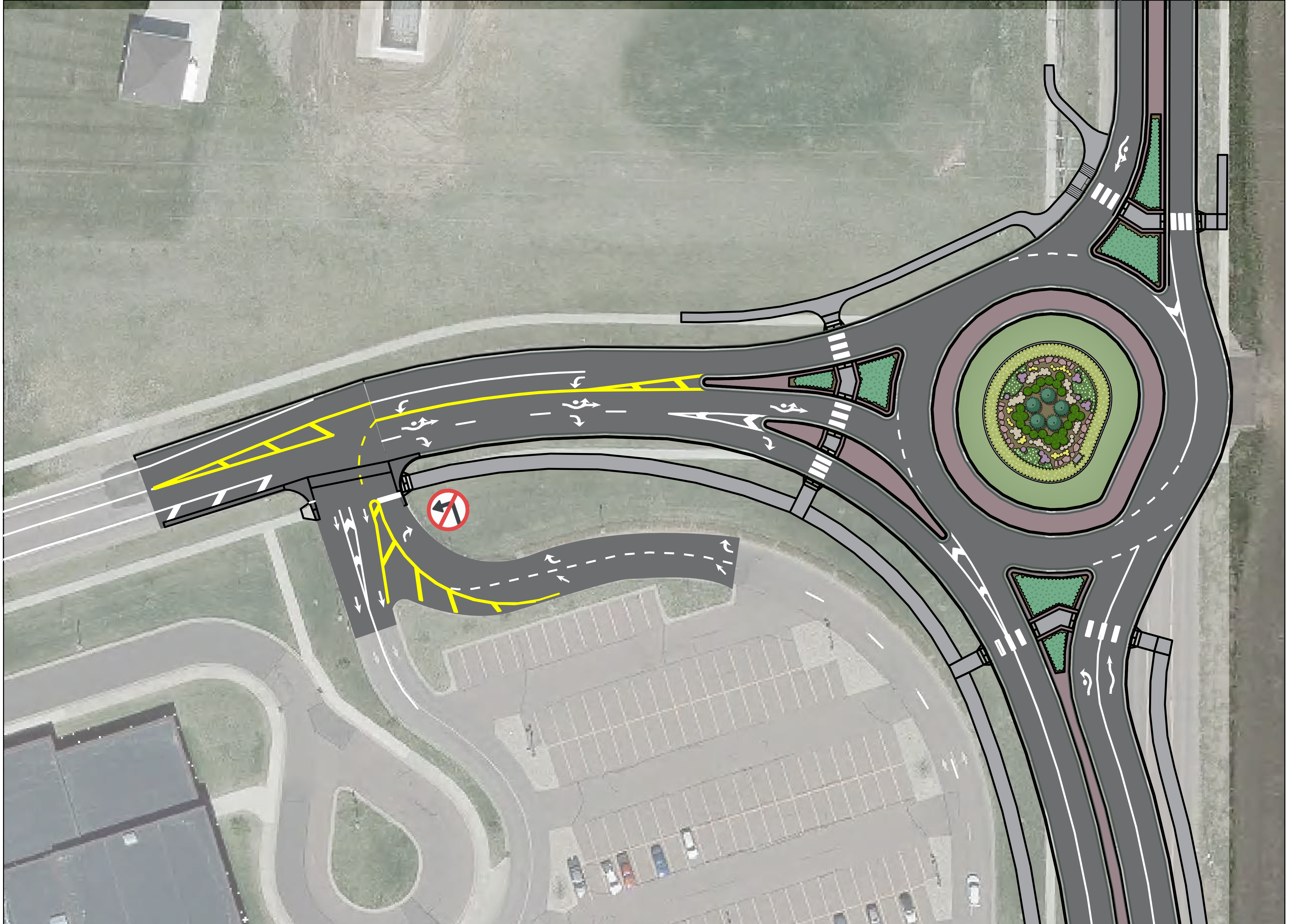
## AREA MAP | W 95TH STREET AND S WESTERN AVE AVENUE





# SOUTH VETERANS PARKWAY ROUNDBABOUT

## How to Safely Navigate a Roundabout



### Drivers

- **Slow down** when approaching a roundabout.
- **Yield to vehicles** already in the roundabout and merge into traffic when it's safe.
- **Yield to pedestrians** in the crosswalk when entering and exiting the roundabout. It's the law!
- **Continue through** the roundabout until you reach your exit. Do not stop or pass other vehicles in the roundabout.
- **Exit** the roundabout immediately if an emergency vehicle approaches, and then pull over. Do not stop in the roundabout.

### Pedestrians

- **Cross only at crosswalks**, and always stay on the designated walkways.
- **Never cross to the central island.**
- **Cross the roundabout one approach at a time.** Use the median island as a halfway point where you can check for approaching traffic.





# SOUTH VETERANS PARKWAY STAY IN TOUCH!



**Get project information, sign up to receive email updates, and contact the project team.**



[Connect@southveteransparkway.com](mailto:Connect@southveteransparkway.com)



[www.southveteransparkway.com](http://www.southveteransparkway.com)

**For questions concerning the construction work, contact:**

**Pat Dressen, HDR Engineering, Inc.**



[Patrick.Dressen@hdrinc.com](mailto:Patrick.Dressen@hdrinc.com)



Office: (605) 782-8100



Mobile: (605) 359-3769