



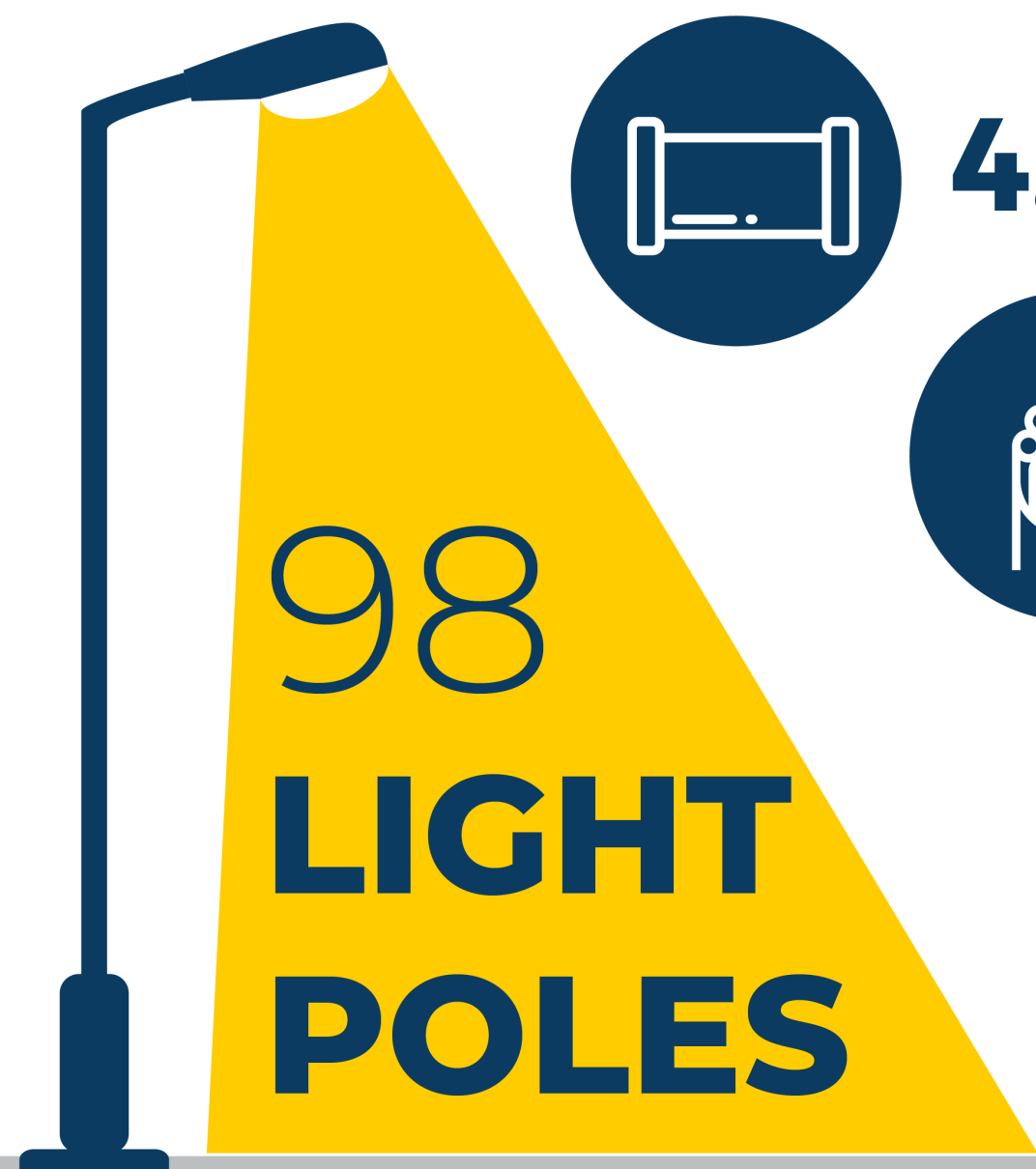
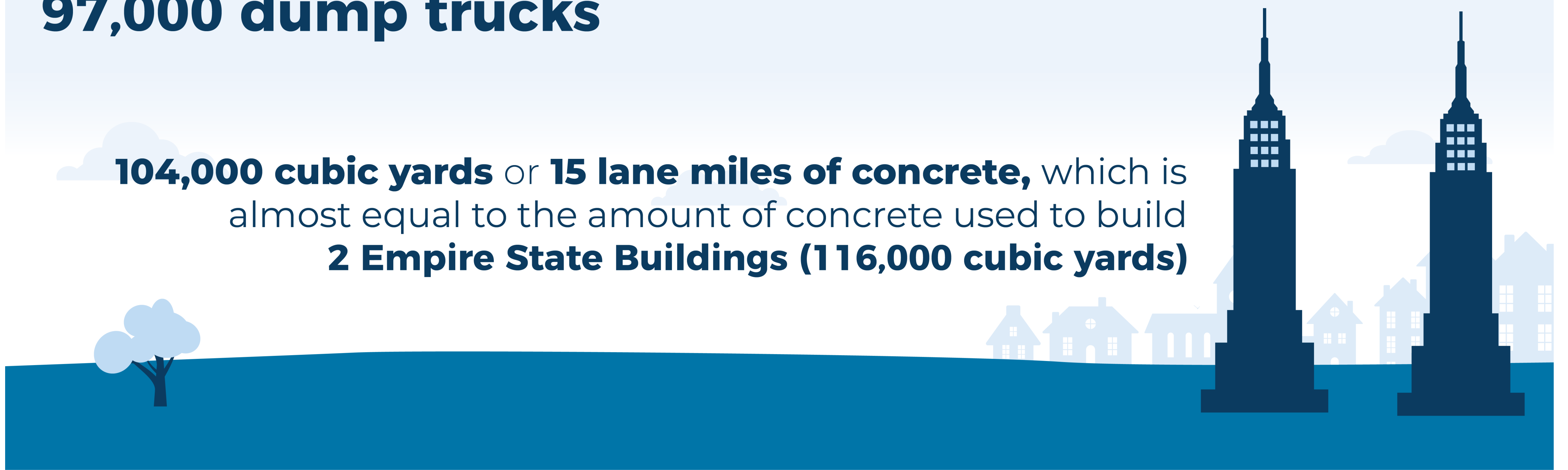
# SOUTH VETERANS PARKWAY CONSTRUCTION QUICK FACTS

Building a new road requires a lot of materials. Construction of South Veterans Parkway from **Western Avenue to Cliff Avenue** will use:

## 1.2 MILLION CUBIC YARDS

of earthwork (moving/placing dirt), which will require **97,000 dump trucks**

**104,000 cubic yards** or **15 lane miles of concrete**, which is almost equal to the amount of concrete used to build **2 Empire State Buildings (116,000 cubic yards)**



**4.2 miles** of storm sewer pipe



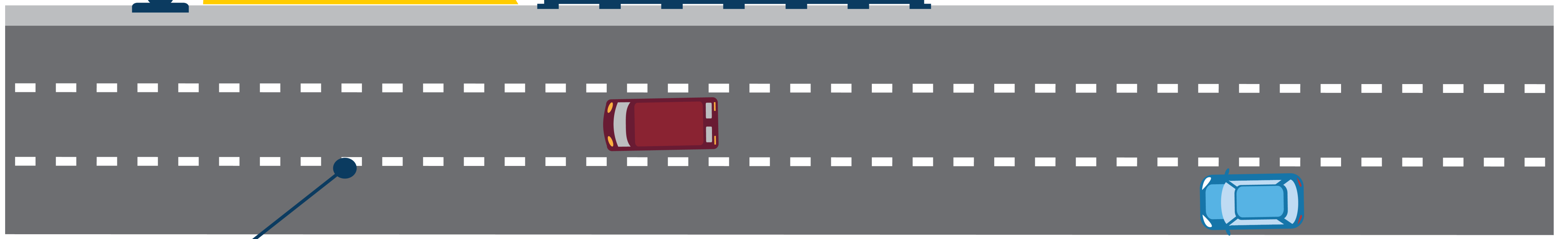
**6 miles** of fiber-optic cable



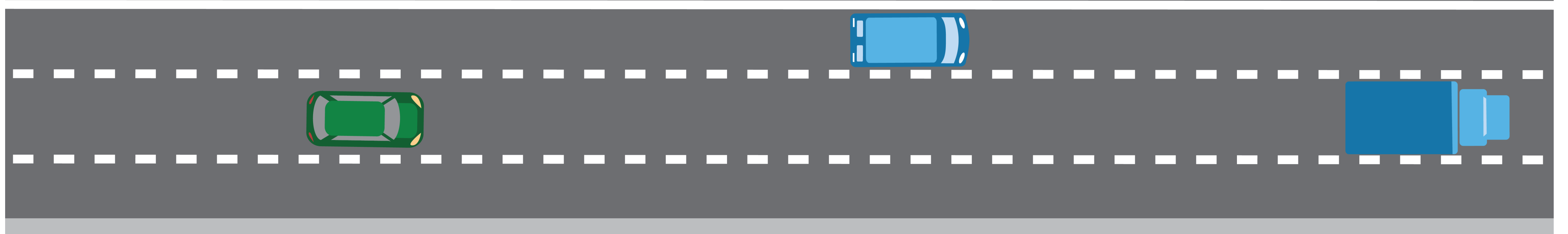
**17.4 miles** of wire



**11 miles** of silt fence



**9 miles** of pavement markings



**2,200 pounds**  
of grass seed

**5.8 miles** of curb and gutter

**98,000**

**tons**  
of gravel

